

EXEMPLO 7



Fazer o estudo das concavidades da função $f(x) = 1/x$.

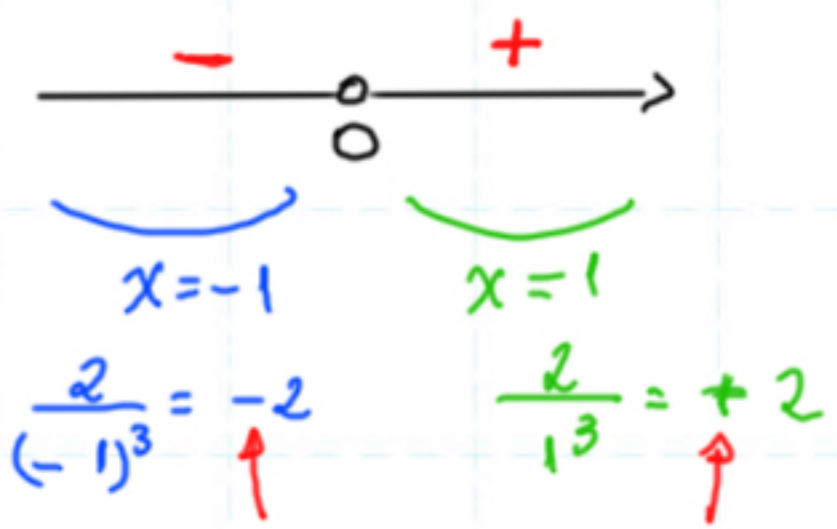
$x \neq 0$

$$f(x) = \frac{1}{x} = x^{-1}$$

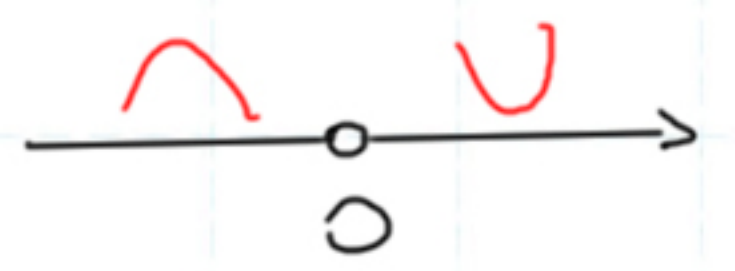
$$f'(x) = -1x^{-2}$$

$$f''(x) = +2x^{-3}$$

$$f''(x) = \frac{2}{x^3}$$



estudo
sinal
 f''



concar.
 f

