

EXEMPLO 8



Fazer o estudo das concavidades da função $f(x) = -x^4 + x^3$.

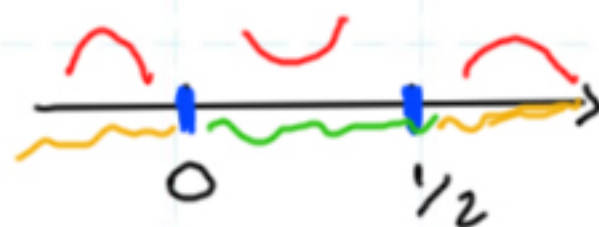
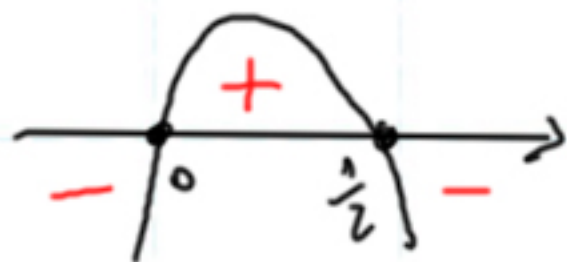
$$f'(x) = -4x^3 + 3x^2$$

$$f''(x) = -12x^2 + 6x$$

$$-12x^2 + 6x = 0$$

$$x \cdot (-12x + 6) = 0$$

$x=0$ ou $-12x + 6 = 0$
 $-12x = -6$
 $x = \frac{6}{12} = \frac{1}{2}$



f''

f

